

357000 000000

358000 000000

Chorley Local Plan (2012-2026)



Policies Map Adopted Edition July 2015

Clayton Brook/Green

Inset - Map 6

Key

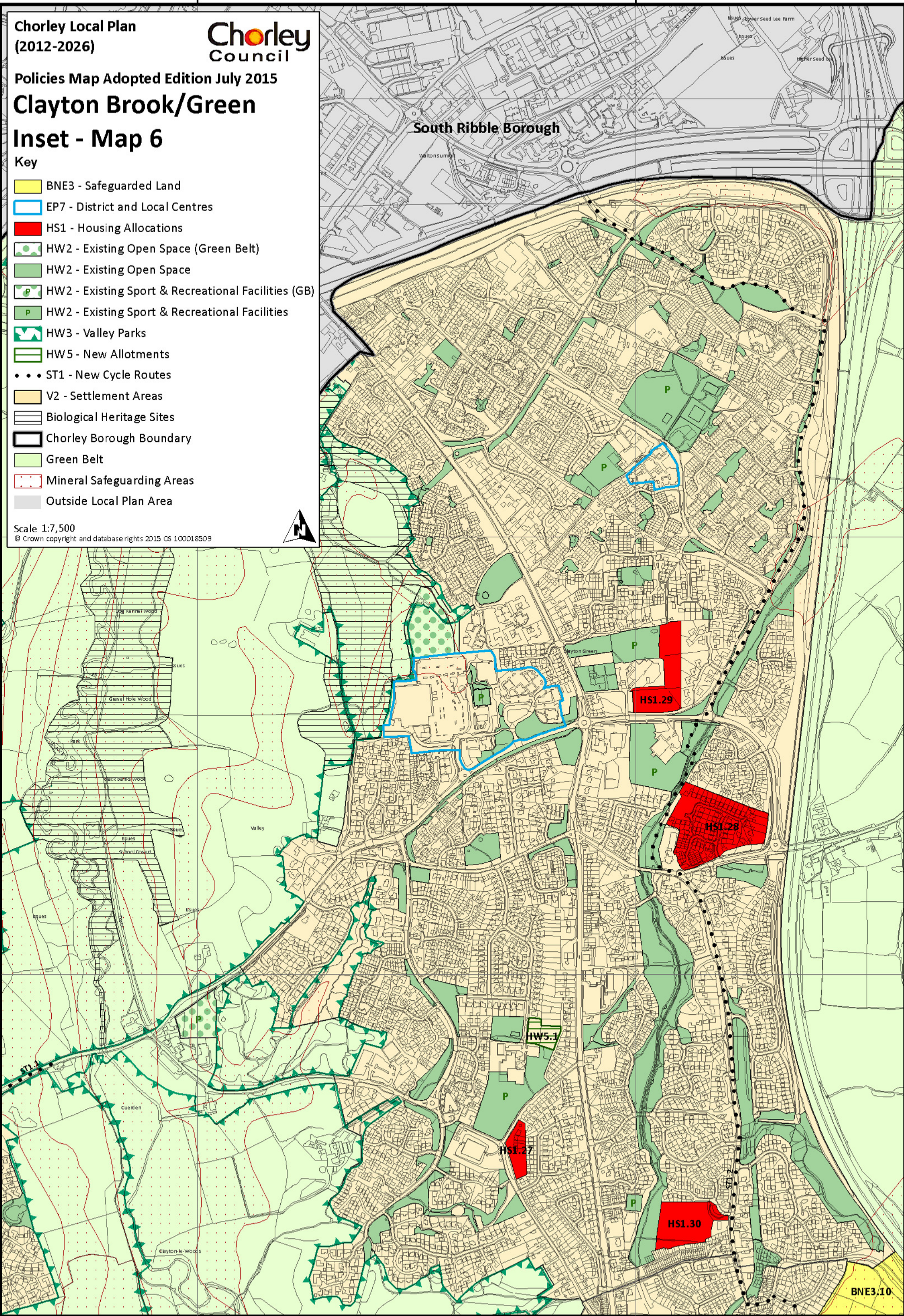
- BNE3 - Safeguarded Land
- EP7 - District and Local Centres
- HS1 - Housing Allocations
- HW2 - Existing Open Space (Green Belt)
- HW2 - Existing Open Space
- HW2 - Existing Sport & Recreational Facilities (GB)
- HW2 - Existing Sport & Recreational Facilities
- HW3 - Valley Parks
- HW5 - New Allotments
- ST1 - New Cycle Routes
- V2 - Settlement Areas
- Biological Heritage Sites
- Chorley Borough Boundary
- Green Belt
- Mineral Safeguarding Areas
- Outside Local Plan Area

Scale 1:7,500

© Crown copyright and database rights 2015 OS 100018509



South Ribble Borough



425000 000000

425000 000000

424000 000000

424000 000000

423000 000000

423000 000000

357000 000000

358000 000000

BNE3.10